



# North Quabbin Health Collaborative



**Public Health**  
Prevent. Promote. Protect.

Public Health Newsletter

COVERING: November 10th – November 16th, 2025

PUBLISHED November 21, 2025

## Upcoming Events:

### Next Collaborative Meeting

Monday December 1<sup>st</sup> at 6pm

Location: Orange Town Hall

## In this issue:

- New Standing Order for Influenza Vaccination for LBOH (pg 2)
- FDA's advisory on all recalled ByHeart Whole Nutrition Infant Formula and Anywhere Pack™ products (pg 3-4)
- Calendar of Events (pg 5)
- Community Food Access Resource List (pg 6)
- Senior Dining Community Resource List (pg 7)
- Stats for Influenza and Respiratory Diseases (pg 8-9)
- New Salem Senior Drop-In Hours (pg 10)



## Reminders

- **Thursday November 28<sup>th</sup> is Thanksgiving Day** - Enjoy this day with friends and loved ones and giving thanks for all of the blessings in your life

## Craft Fairs:

### WARWICK

Holiday Fair located at Warwick Community School: Saturday, November 29th from 10:00 a.m. to 3:00 p.m. Be sure to mark your calendars for this festive event where you can get a jump-start on your holiday shopping by browsing over 40 craft tables full of local, quality items! See the flier in this newsletter for more details.

### PETERSHAM

Holiday Fair located at Petersham Congregational Church: Saturday December 6<sup>th</sup> from 9am to 2pm  
There will be Christmas crafts, Christmas decorations food and raffles. Something for everyone!

### QUABBIN VALLEY HEALTHCARE

Holiday Craft Fair Saturday November 22<sup>nd</sup> from 9am to 2pm. Crafts, Basket Raffles, Chance Auction, Baked Goods, Lunch Counter, Santa Claus!



**Visit the North Quabbin Health Collaborative website to download materials and see additional information at:** <https://www.northquabbinhc.org/>

Don't forget to send your area news and activities to [cpage@townoforange.org](mailto:cpage@townoforange.org) to be included in the next newsletter.

## **New Standing Order for Influenza Vaccination for LBOH**

Friday, November 14, 2025

Dear local public health partner,

The Massachusetts Department of Public Health (DPH) has released new standing orders for administration of influenza vaccine for Local Boards of Health. [Please view the standing orders here](#), and other resource documents provided on [OLRH Resources page](#).

Thank you,

Department of Public Health

# **FDA's advisory on all recalled ByHeart Whole Nutrition Infant Formula and Anywhere Pack™ products**

## **11/14/25 update**

The FDA is advising parents and caregivers not to buy or feed any ByHeart Whole Nutrition Infant Formula and Anywhere Pack™ products to infants. For more information about the recall, please visit [ByHeart Broadens Voluntary Recall While Investigation Continues | FDA](#).

There is a suspected case of infant botulism identified in Massachusetts associated with this recall.

DPH is asking local health departments to support recall effectiveness checks in retail establishments and respond to questions from parents in your communities.

Infant botulism is a rare but very serious disease that can damage the nerves, leading to weakness and paralysis. It occurs when *Clostridium botulinum* spores are ingested and grow in an infant's intestinal tract. The bacteria produce toxins that affect the nervous system.

If an infant shows any of these symptoms, parents should seek medical care immediately. Parents and caregivers with concerns should contact their healthcare provider.

Infants with botulism may show:

- Constipation
- Poor feeding
- Difficulty sucking or swallowing
- Drooping eyelids (ptosis)
- Sluggish pupils
- Low muscle tone
- Weak or altered cry
- Loss of head control
- Generalized weakness
- Breathing difficulty
- Respiratory arrest

Visit [Outbreak Investigation of Infant Botulism: Infant Formula \(November 2025\) | FDA](#) to review further details on the outbreak. ByHeart Whole Nutrition Infant Formula and Anywhere Pack™ products are sold in Massachusetts and nationally in the U.S. and were previously available through multiple retailers including Shaws, Target, Walmart, Whole Foods, Star Market, and Wegmans.

# **FDA's advisory on all recalled ByHeart Whole Nutrition Infant Formula and Anywhere Pack™ products Continued**

## Recommended Actions for Local Health Departments

### 1. Retailer Outreach (as needed)

If your city or town has retailers that may carry infant formula, you may contact them to ensure:

- Recalled ByHeart products have been removed from shelves and not available for purchase, including returned items.
- Staff are aware of the recall and know not to restock affected product.
- Complete the Recall Effectiveness Check and return the checklist to the Division of Food Protection.

### 2. Responding to Resident Inquiries

You may advise residents:

- Do not use ByHeart formula products.
- If an infant consumed ByHeart formula and has symptoms, seek medical care immediately.
- If the infant consumed the product but is not currently symptomatic, caregivers should monitor closely over the next several weeks.
- Caregivers should save the container, record the lot information, and label it "DO NOT USE."
- If no symptoms develop after 30 days, the product may be discarded unless otherwise directed by DPH.

### 3. Ongoing Monitoring

This is an active and evolving investigation. The FDA and CDC continue to identify new information, including additional affected lots and cases.

DPH will share updates as they become available.

You can also view the link in your browser by using the following URL:

<https://www.fda.gov/safety/recalls-market-withdrawals-safety-alerts/byheart-broadens-voluntary-recall-while-investigation-continues>

# Calendar of Events

**WENDELL Library:** SATURDAY NOVEMBER 22: 'Shiatsu With Friends' Explore & Feel Vibrant With Wholistic Practitioner Shell Hines. Confirm Your Spot 978- 544-3559 [wendell@cwmars.org](mailto:wendell@cwmars.org) 1-4 p.m. Funded by the Wendell Cultural Council.

**WARWICK:** Holiday Fair Saturday, November 29 from 10am to 3pm at the Community School - Small Business Saturday" Holiday Fair. We expect to be offering lunch and a bake sale. Santa has confirmed and we will have live holiday music on the stage.

**NEW SALEM** Library River Valley Quartet Tuesday, December 2, 6:30 p.m. to 7:30 p.m. Mark your calendar so you don't miss this musical event with four clarinets (including our own Sue Dunbar on bass clarinet!) playing a mix of seasonal, classical, marches, and more. There will be something for everyone with lots of toe-tappers!

**WENDELL Library:** TUESDAY, DECEMBER 2: Adult Book Group. Greta & Valdin by Rebecca K Reilly. 10 a.m.

**NEW SALEM:** Volunteering for Village Neighbors

Village Neighbors, a volunteer-run non-profit organization, helps residents over age 60 in four towns including New Salem stay connected and age independently at home. One of the best things about volunteering for Village Neighbors is it's on your terms and doesn't have to be a huge commitment. You decide what you're interested in doing and then provide those services as your life permits. As volunteers, we are helping our senior neighbors and at the same time helping ourselves by creating connections and friendships. There will be a volunteer orientation Tuesday, December 9, at 6:30 p.m., at the Wendell senior center. Call Village Neighbors at (413) 345-6894 or email [volunteers@villageneighbors.org](mailto:volunteers@villageneighbors.org) with your contact info if you'd like to attend. At the orientation meeting, you will learn more about our organization, and meet other volunteers. The orientation lasts about an hour, you'll fill out an application and give permission to do a background check. If you plan to provide transportation, we'll need a copy of your driver's license and page one of your insurance coverage selection pages. Please bring contact information for two references.

# Community Food Access Resource List

Resource Names	Location	Days/Hours	Contact Information
Good Neighbor Food Pantry	Old Town Hall Wendell, 6 Center St, Wendell	Sundays 11am-noon, Last Name A-K 1st and 3rd Sunday, Last Name L-Z 2nd and 4th Sunday	978-544-3775
The Salvation Army	107 Ridge Ave, Athol	Tuesday 9am-noon, Every other Tuesday delivery	978-249-8111
The Salvation Army	72 Chapman St, Greenfield	Monday 9am-11am, Closed on Holidays	413-773-3154
Our Lady Immaculate Church	192 School St, Athol	Tuesdays 10am-1:30pm	978-249-6790
Greenfield Pop Pantry	2nd Congregation Church, 16 Court Sq, Greenfield	Tuesdays 4:30pm-5:30pm	413-774-4355
Community Food Pantry at Athol High School	2363 Main St, Athol (Located in the back of AHS)	Wednesdays, Summer hours 11am-1pm, School year hours 3pm-5pm	978-249-2435 ext 314
Athol Senior Center	82 Freedom St, Athol	Wednesdays 11am-11:45am	978-249-8986
Orange Council on Aging	St Mary's, 20 West Myrtle St, Orange	Wednesdays 10am-11am	978-544-3481
Turners Falls Mobile Food Bank	62 5th St, Turners Falls	3rd Wednesday of Month 1:30pm-2:30pm	413-419-0079
Orange Food Pantry	118 East Main St, Orange	Thursdays 10am-3pm (If it's a holiday then it will be open on Wednesday. Deliveries on Friday for Athol/Orange)	978-544-2149 (call for deliveries)
St Vincent De Paul/St Mary's Food Pantry	19 Congress St, Orange	Open by appointment only	978-544-6814
Marion's Food Pantry	On the Royalston Common	Open by appointment only	978-895-7887
The Salvation Army	72 Chapman St, Greenfield	Monday-Friday 8:30am-9:30am (Breakfast) 11am-12:30pm (Lunch)	413-773-3154
Our Lady of Peace Church	90 7th St, Turners Falls	Mondays 4pm-5:30pm (Distributing hot meals and grocery bags to go from the sidewalk in front of the church)	413-863-2585
The Salvation Army	107 Ridge Ave, Athol	Tuesdays 4:30pm-5:30pm (Dine in/Delivery)	978-249-8111
Second Congregational Church	16 Court Square, Greenfield	Tuesdays and Wednesdays 4:45pm-5:45pm, hot meals to go Tuesdays and Wednesdays on the side driveway	413-774-4355
Athol Senior Center	82 Freedom St, Athol	Tuesdays and Wednesdays at noon (Must RSVP the day before). For individuals 60 and over and/or disabled. Senior Dining at Lynn's Luncheonette. Enjoy lunch with others. A \$3.50 donation is welcome	978-249-8986 Reserve your meal by 9am the day before you dine
St Frances Church Hall	101 Main St, Athol	Wednesdays (September-May) doors open at 5pm	978-249-7304
Orange United Methodist Church	104 S Main St, Orange	Thursdays 4:30pm-5:15pm (Distributing ready-made meals to heat up at home. We offer deliveries for meals and pantry bags by applications)	413-772-1033 <a href="https://www.fccmp.org/community-meals/orange/">https://www.fccmp.org/community-meals/orange/</a>
Trinitarian Congregational Church	147 Main St, Northfield	Fourth Thursday 4:30pm (Take out meals only. You must RSVP)	413-498-5839
Athol Congregational Church	1225 Chestnut St, Athol	First Friday of the Month, doors open at 5pm, dinner at 5:30pm (Must RSVP by Tuesday for a meal on Friday)	978-249-6202
Meals on Wheels	Athol Senior Center & Orange Council on Aging	LifePath Inc of Greenfield provides home delivered (noontime) meals to homebound seniors, age 60 and older and/or disabled, who are not able to prepare nutritious and balanced meals for themselves.	1-800-732-4636 (call to see if eligible)



# Senior Dining Community Resource List

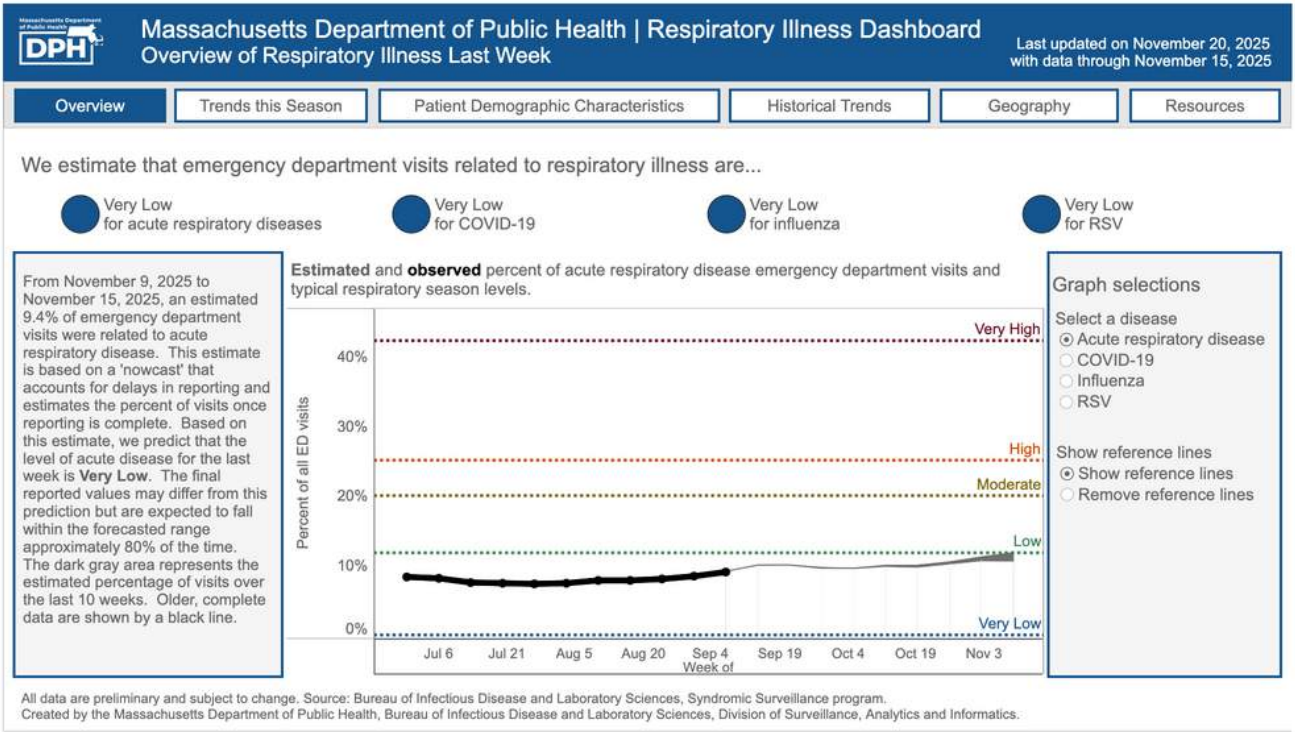
Senior Dining Center or Luncheon Club Location	Serving Days Schedule	Contact/Phone Reservations
<b>Athol Senior Center</b> 82 Freedom Street Athol, MA 01331	Tuesday & Wednesday Congregate	(978) 249-9001
<b>New Salem Luncheon Club</b> Central Congregational Church 22 South Main St. New Salem, MA 01355	2nd & 4th Friday of the month Congregate Dine-in	(978) 575-0116
<b>Petersham Luncheon Club</b> Town Hall Petersham, MA 01366	Wednesday Congregate and Grab and Go	978-821-5549
<b>Phillipston Luncheon Club</b> 1st Congregational Church The Common Phillipston, MA 01331	1st & 3rd Tuesday of the month Congregate Dine-in Closed December to March	(978) 407-9504
<b>Royalston Luncheon Club</b> Town Hall Royalston, MA 01368	Wednesday Congregate Dine-in	978-249-8957

# NQHC COVID-19 and Other Reportable Diseases

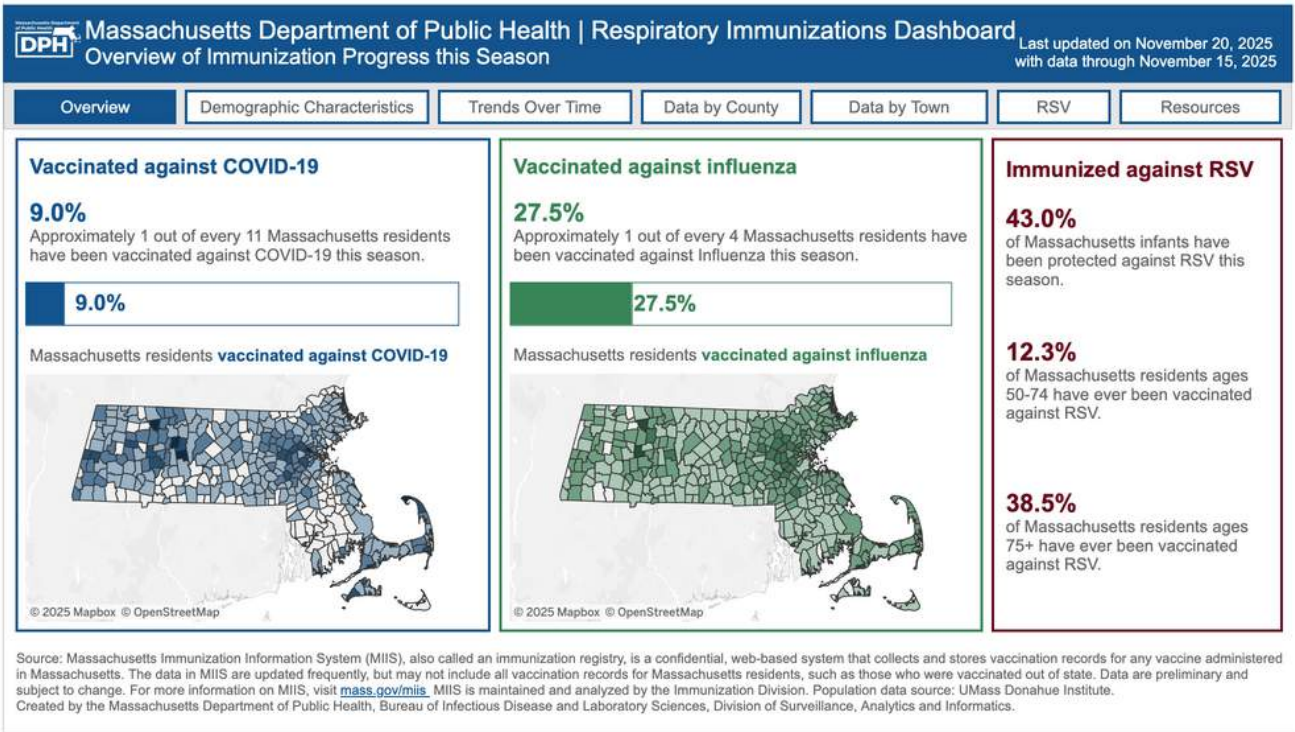
In the the one-week period of November 10th through November 16th, 2025:

- 0 official cases of COVID-19 within the district
- 1 cases of influenza

## Respiratory Illness Reporting



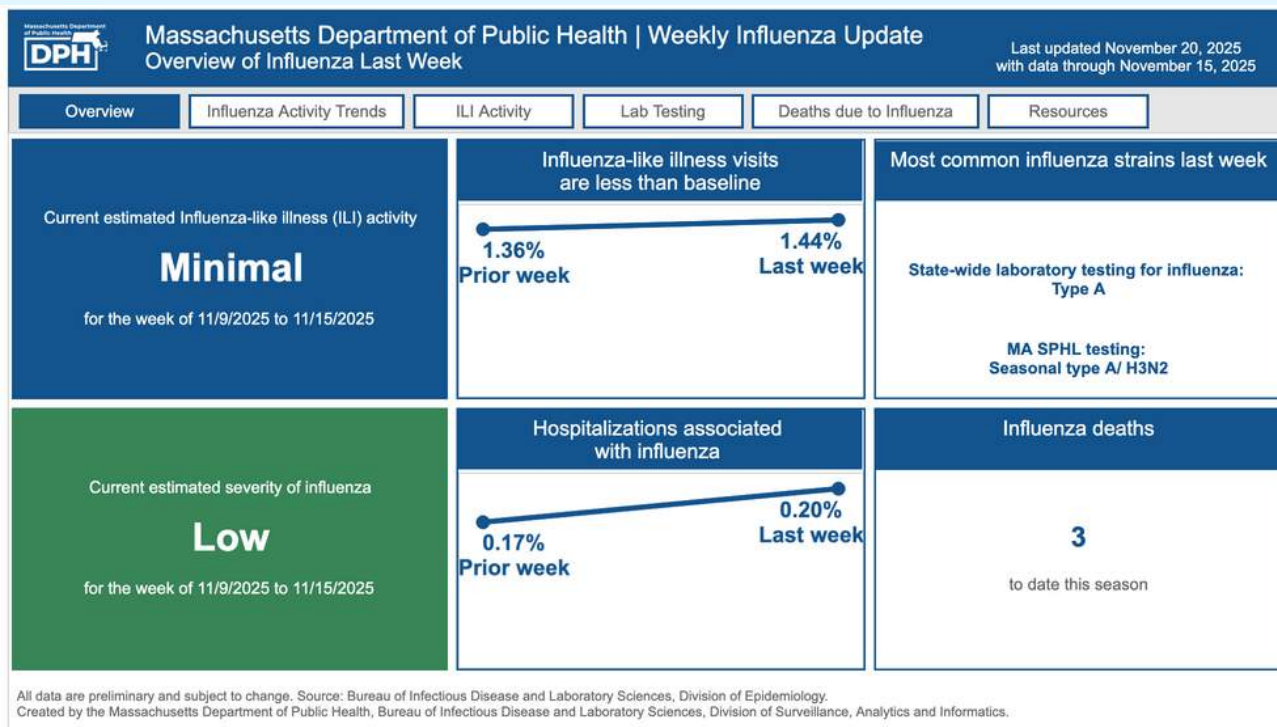
Here is the overall percentages if individuals in Massachusetts immunized against Covid-19 and Influenza



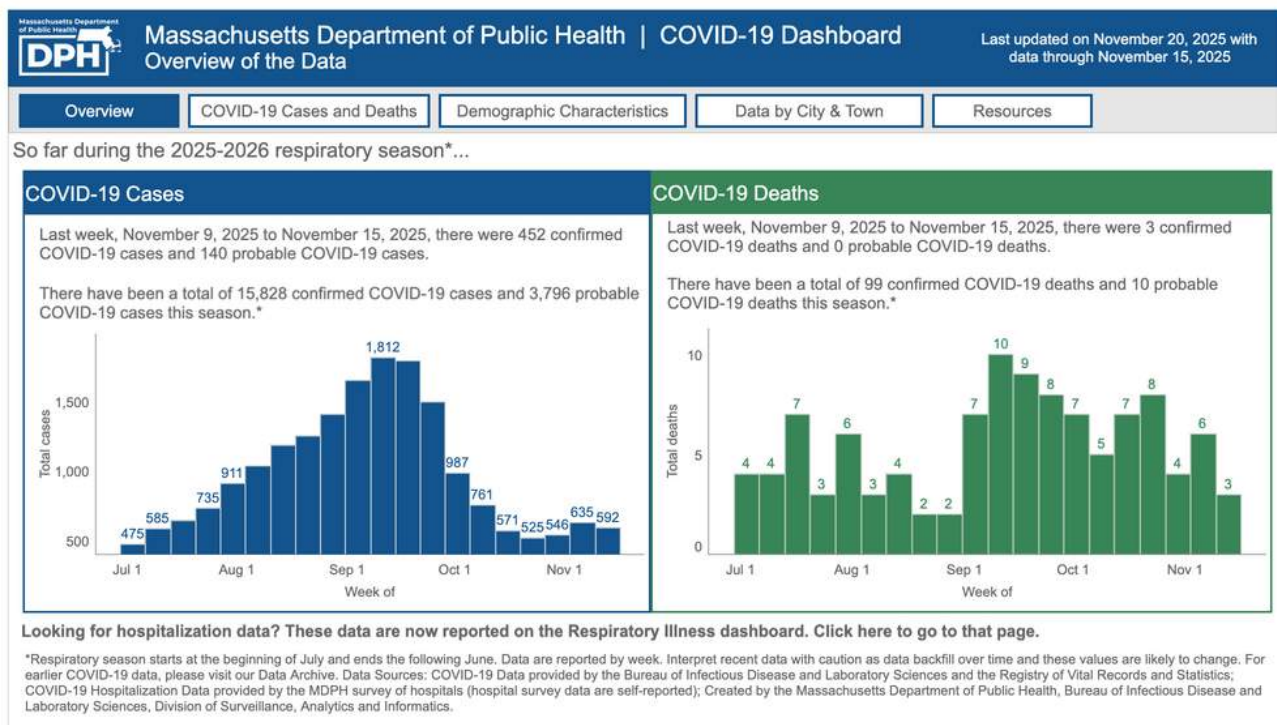


# The Massachusetts Department of Public Health

Influenza Reporting – Influenza rate is still at Minimal and Severity is at Low



COVID-19 Reporting – Number of cases remains static



At this point in time there have been no additional updates to the Massachusetts Covid guidelines. The latest version can be seen at <https://www.mass.gov/info-details/staying-home-to-prevent-the-spread-of-respiratory-viruses>

Report created by Christy Page: [cpage@townoforange.org](mailto:cpage@townoforange.org)  
Next newsletter will be Friday November 28th, 2025

New Salem Public Library  
and the New Salem Council on Aging

# Senior Drop-In Hours

**Wednesdays, 1:00 – 4:00 pm**

**Tea & Topics:**

**“What’s New With the Flu  
& Other Vaccination Updates”**

**Dec. 3, 2:00-3:00 pm**

“Tea & Topics” is a special program series during Senior Drop-In Hours on Wednesdays. Once a month, Samantha Piragis (Public Health Nurse for the North Quabbin Health Collaborative) will be joining us to share some health information in an informal setting with light refreshments.

Seniors are still welcome to spend time working on the ongoing jigsaw puzzle, looking for books, using the computers and printers, or just visiting with friends in the YA area of the library



New Salem Public Library  
23 S. Main St., New Salem, MA 01355  
978-544-6334 /n\_salem@cwmar.org

